

Locksley Retreat



Contacts

Emergency:	000
Mike:	0431 913 418
Louise:	0422 472 190
Seymour Hospital:	5793 6100
Longwood Pub:	5798 5203
Nagambie Brewery:	7019 8170
Ruffy Store:	5790 4387
Avenel Pizza:	5796 2522
Tahbilk cafe:	5736 2443

Places to see

Locksley Retreat is surrounded by some fantastic towns, sights and nature. If you are looking for somewhere to explore here are some ideas:

Longwood - Longwood is only 8 minutes away from Locksley by car. This small town boasts a traditional country pub as well as a gem museum and store.

Euroa - Following in the same direction from Longwood, is the larger township of Euroa. Euroa has a small supermarket, cafes, bakery, pubs and parks.

Ruffy - Ruffy is a very small country town located in the mountains. It is a lovely drive to get there.

Avenel - Avenel is only 8 minutes away from Locksley by car, heading back towards Melbourne. It is a beautiful small town with a creek/picnic area, outdoor pool, famous pizza place or if you would like to grab something to cook yourself, an outstanding butchers. Avenel also has a couple of small milk bars, cafes and a service station.

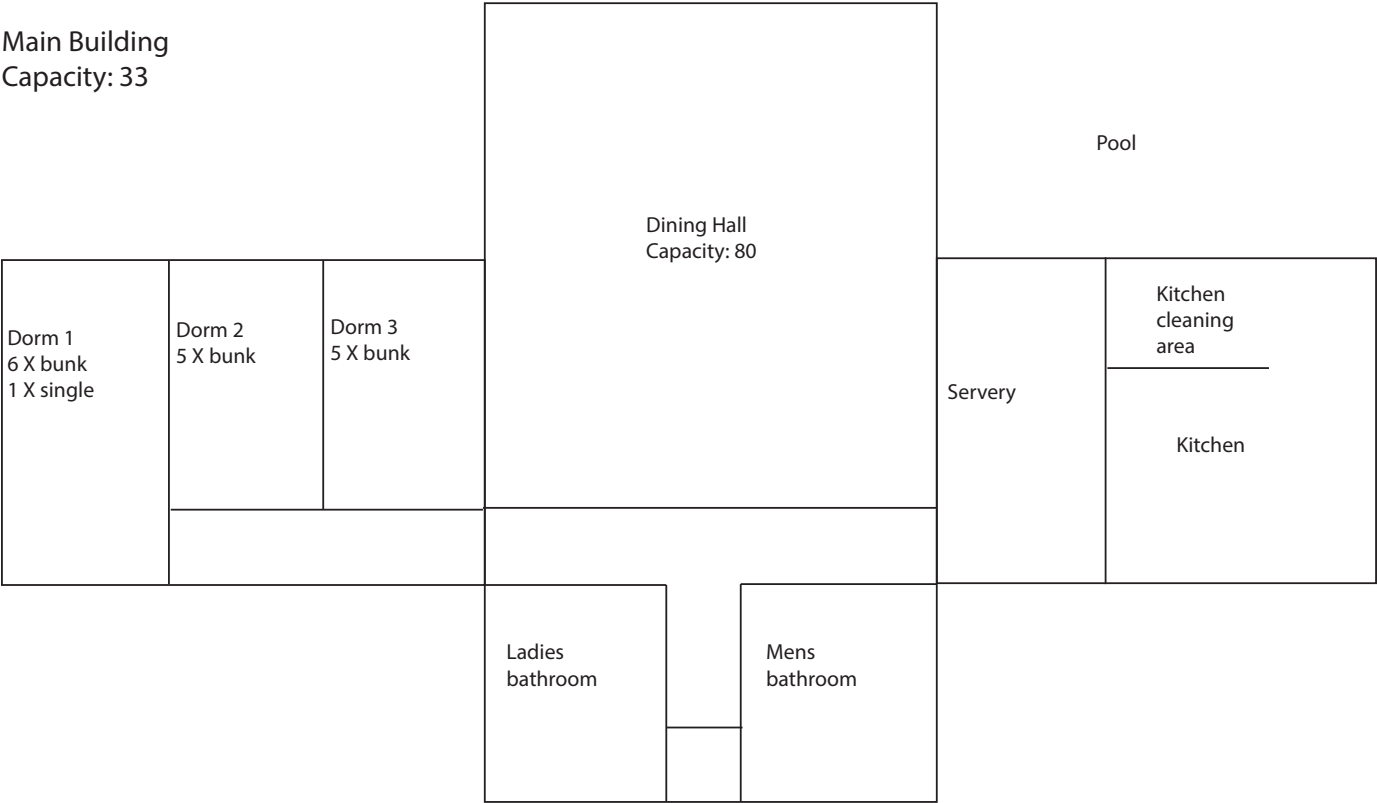
Nagambie - Nagambie is a 20 minute drive from Locksley. It is famous for its lakes and has a range of amenities including cafes, bakeries, supermarket, pubs and the Nagambie Brewery.

Tahbilk - If you are travelling out towards Nagambie we recommend stopping in at the Tahbilk winery. This winery is housed in a beautiful old building with award winning wines on tasting. There is also a cafe for lunch.

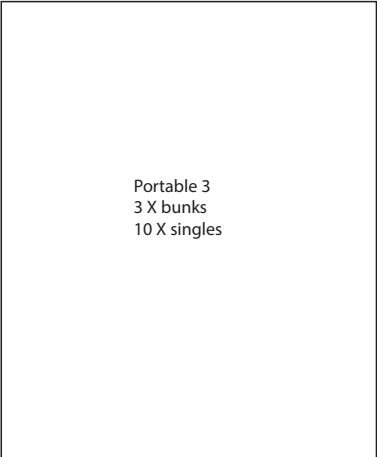
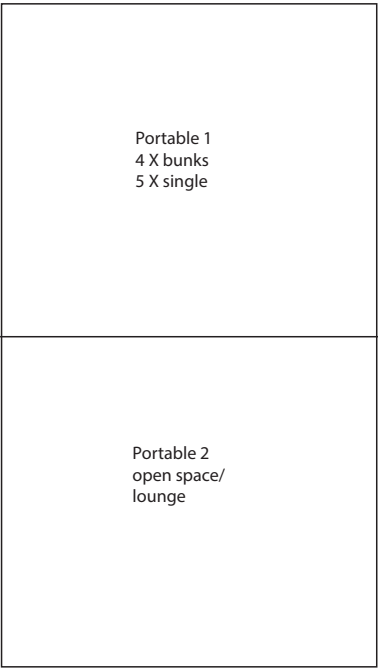
Mitchelton - located close to Nagambie is the Mitchelton winery. This winery also boasts some amazing wines as well as a cafe and restaurant.

Bushwalks - Please contact us for a range of bushwalking options.

Main Building
Capacity: 33



Portables
Capacity: 29



The Property

There are a few buildings at Locklsey Retreat. Most are available for your enjoyment, while others can be dangerous and we ask you to not enter. These buildings include any type of shed and yards or any building signed as 'do not enter'. We also ask that you do not enter the main house located next door to the property.

Creek Building Capacity: 16

Main lounge Capacity: 20	Kitchen	
	Room 6 2 X long single	
	Room 5 2 X long single	
	Room 4 1 X bunk 1 X long single	
	Room 3 2 X long single	
Mens bathroom		
Ladies bathroom		
Room 1 2 X bunks 1 X single	Room 2 2 X long single	
		Lounge capacity: 6

Water

All water at Locklsey Retreat comes from tanks. The water is safe to drink and is treated. In the large hall building all tap water has been treated with ultra violet light.

PLEASE be careful when using water. We are currently in a drought and water is precious. To help us preserve water we ask you to:

1. Take three minute showers
2. Do not leave taps running while brushing teeth
3. Check you have turned of taps completely
4. Either use the dishwasher (when full) in small kitchen or quickly rinse and leave dishes next to the large dishwasher in the commercial kitchen (we will wash these after you leave).

We thank you for helping us preserve water.

Pool

The pool is open at all times for your enjoyment, and is solar heated. If you would like to turn the spa on please let us know and we can show you how to operate it.

To keep you safe there are a few rules you will need to follow when using the pool:

1. No running in the pool area
2. No diving
3. No bombing
4. No back or forward flips
5. Children 15 and under must be supervised by an adult at all times
6. Strictly **NO GLASS** in the pool area

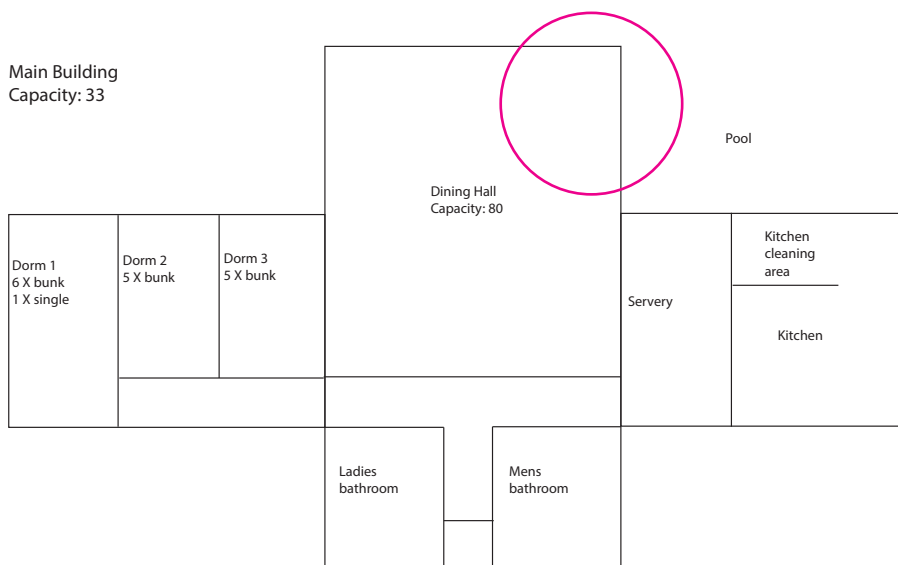


First Aid

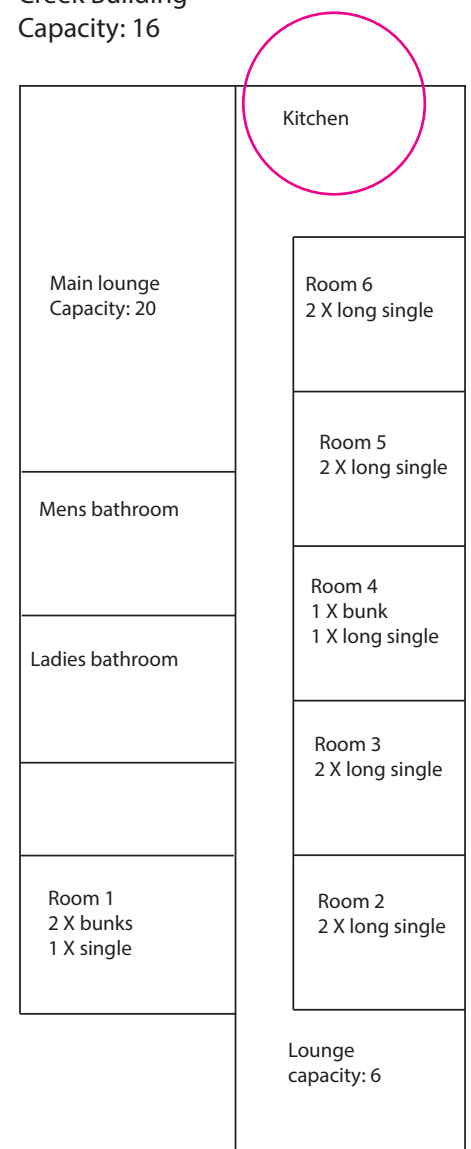
If you injury yourself during your stay, please find the First Aid kits located in the kitchen areas of both the main buildings.

For major injuries please call 000 and one of the owners so they can assist you while you wait for the ambulance.

Main Building
Capacity: 33



Creek Building
Capacity: 16



Snakes

Locksley Retreat is a country property and as such, snakes may be present during the late Spring, Summer and early Autumn months. The most common snakes here are the brown and black snake. Both these snakes are very venomous. Snakes usually will try and hide from people, however there are a few rules to keep you safe from snakes.

1. Do not put your hands or feet into bushes or other places you cannot see.
2. If you are going for a walk, regularly check the ground where you are walking.
3. Make sure all doors are closed behind you.
4. Always use a torch or light when walking at night outside.
5. Leave shoes inside.

It is very unlikely that you will be harmed by a snake, but in the unlikely event that you are bitten please do the following: (more info see healthdirect.gov.au)

1. Call triple zero (000) for an ambulance.
2. Apply a pressure immobilisation bandage over the bite itself. It should be tight and you should not be able to easily slide a finger between the bandage and the skin.
3. Then use a heavy crepe or elasticised roller bandage to immobilize the whole limb. Start just above the fingers or toes of the bitten limb, and move upwards on the limb as far as the body. Splint the limb including joints on either side of the bite.
4. Keep the person calm and as still as possible until medical help arrives.
5. If possible, mark the site of the bite on the bandage with a pen.
6. Avoid washing the bite area because any venom left on the skin can help identify the snake.

DO NOT apply a tourniquet, cut the wound or attempt to suck the venom out

Kitchens

The kitchens and utensils and appliances are available for you to use during your stay. The smaller kitchen in the creek building has an electric oven, microwave, fridge and dishwasher. You may use any of these appliances.

The commercial kitchen in the larger building has two commercial gas ovens, commercial dishwasher, microwaves and fridges. If you would like to use the commercial kitchen please call Michael and he will show you how to use the appliances and will light the ovens. Please DO NOT attempt to use the commercial kitchen without contacting Michael first.

Bathrooms

There are five bathrooms located across the two buildings.

Creek building - The Creek building two bathrooms:

- a male bathroom, one toilet, one urinal and two showers and;
- a female bathroom, two toilets and two showers

Main building - The Main building has three bathrooms:

- a male bathroom, two toilets, one urinal and three showers
- a female bathroom, three toilets and three showers and;
- a disabled bathroom, one toilet and one shower

